

浙江蓝点动力有限公司

ZHEJIANG BLUEPOINT POWER CO.,LTD.

浙江蓝点动力有限公司

ZHEJIANG BLUEPOINT POWER CO.,LTD.

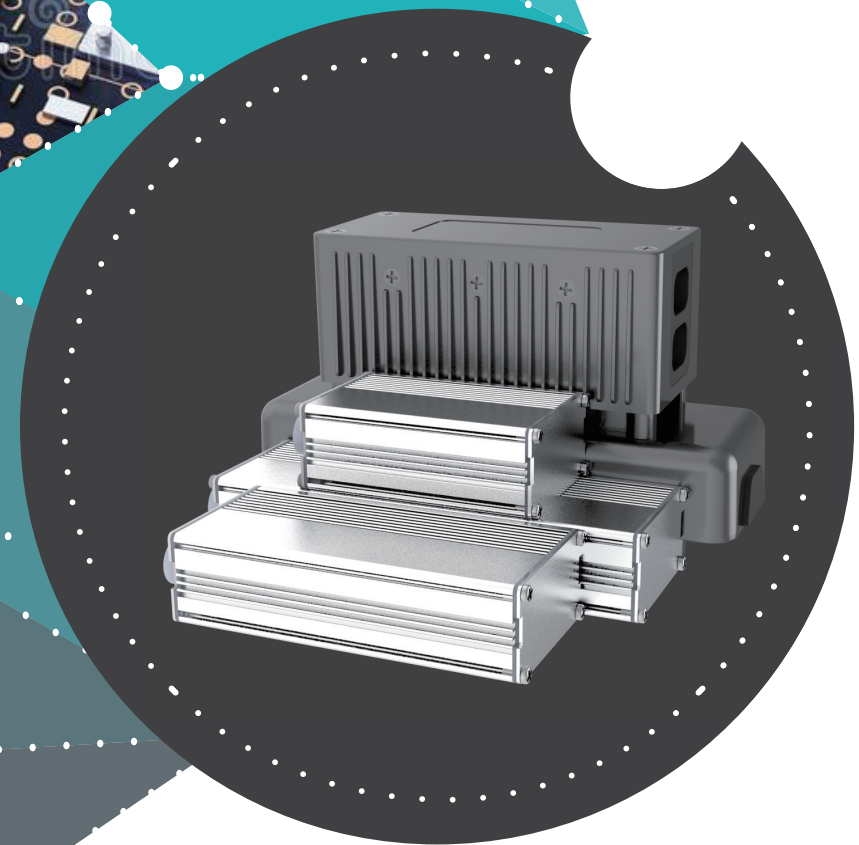
+86 571 86131893

lddl@ld-zj.com

<https://www.ld-zj.com>

杭州市临平区东湖街道东湖北路488-1号19幢
Bld 19, No. 488-1, North Donghu Road, Linping District, Hangzhou City, Zhejiang Province, China.

浙江省湖州市德清县阜溪街道环城北路 889号33 号楼
Bld 33, No. 889 North Huan Cheng Road, Fuxi Street, Deqing County, Huzhou City, Zhejiang Province, China



Focus on eMobility
Focus on your riding experience



公司简介
About Our Company P4-P7

资质及认证
certification P8-P9

目录

TABLE OF CONTENT

C201 仪表
C201 Display P19

C351 仪表
C351Display P19

C352 仪表
C352 Display P20

C353 仪表
C353 Display P20

W108 仪表
W108 Display P21

W750 仪表
W750 Display P21

W780 仪表
W780 Display P21

6T 控制器
6T Controller P11-P12

9T 控制器
9T Controller P13

12T 控制器
12T Controller P14-P15

18T 控制器
18T Controller P15

24T 控制器
24T Controller P16

控制器外壳
Controller Housing P16-P17

传感器
Speed Sensor P23-P24

双电池模块
Dual Baterry Module P25

烧写器
Programmer P26

双驱控制器介绍
Introduction of dual-
drive P27

公司简介 About Our Company

“ 浙江蓝点动力有限公司，前身为杭州仙童电子技术有限公司。创办于2004年，坐落于杭州市临平区，设有研发中心和生产基地达八千平方米，拥有丰富的开发和制造能力，产品远销中东、欧美全球各地，服务上百家客户，获得了业界的广泛好评。

蓝点深耕行业二十年，一直致力于高端电动车驱动系统的研发，在无刷直流电机控制系统领域处于行业领先地位，为客户的移动出行提供多种解决方案，主要产品有中驱电机控制器系列，双驱控制器系列，型材控制器系列，车载仪表，双霍尔传感器等，2020年销售额突破1.7亿，2021年销售额突破3亿。

蓝点一路前行，不断进取，以开发高信赖产品为目标，不断提升竞争力，争做控制器行业的技术领导者。

Zhejiang Bluepoint Power Co., Ltd. formerly known as Hangzhou Xiantong Electronic Technology Co., Ltd. Founded in 2004, located in Linping District, Hangzhou City, with R & D center and production base of 8,000 square meters, with rich development and manufacturing capabilities, products are exported to the Middle East, Europe and the United States all over the world, serving hundreds of customers, has been widely praised by the industry.

Bluepoint Power has been deeply engaged in the industry for 20 years, has been committed to the research and development of high-end electric vehicle drive systems, in the field of brushless DC motor control system leading in the industry. providing customers with a variety of solutions for e-mobility, the main products are mid-drive motor controller series, dual-drive controller series, profile controller series, vehicle display, dual-hall sensors, etc., sales exceeded 170 million in 2020 and sales exceeded 300 million in 2021.

Bluepoint Power is moving forward all the way, constantly forging ahead, aiming to develop high-reliability products, constantly improving competitiveness, and striving to become a technology leader in the controller industry. ”



合作品牌 Cooperative brand



服务区域 service area



研发中心 R&D center

研发中心拥有一支技术强、专业精、团队协作精神优秀的团队,现有20余名员工,致力于新技术、新工艺、新产品的研发。

The R&D Centre has a team with strong technology, professionalism and excellent teamwork spirit , There are more than 20 employees here, who are committed to the research and development of new technology, new techniques and new products.

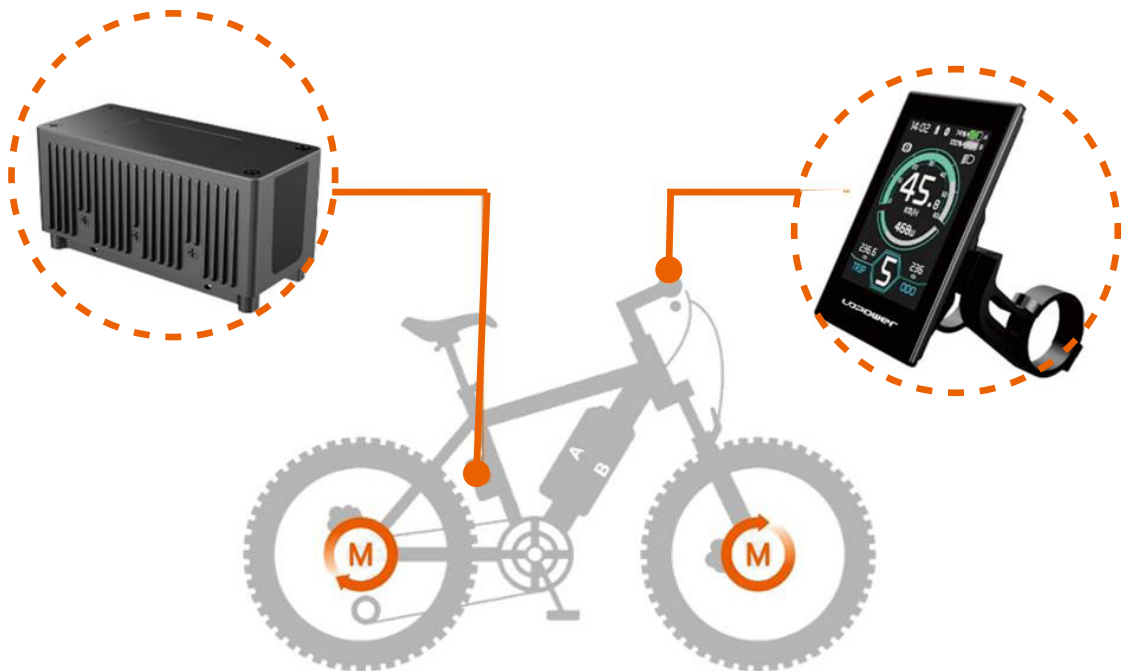


解决方案 solution

软件：提供底层驱动方案及功能逻辑。

硬件：各种款式的控制器、仪表、传感器。

售后：提供专业、高效的售后服务。



生产基地 production base

生产基地位于湖州市德清县, 厂房总面积4千多平方米, 配有标准的现代化厂房、先进的检测设备及生产流水线。

The production base is located in Deqing County, Huzhou City, the total area of the plant is more than 4,000 square metres, equipped with standard modern plant, advanced testing equipment and production lines.



仪表车间 | Display Workshop



控制器车间 | Controller Workshop



仓库 | Repository



办公区 | Office



会议室 | Meeting Room



产品展示区 | Product Display Area

资质及认证 Qualification and certification



控制器是电控系统的核心配件之一，如人的“大脑”，通过传感器感知骑行状态，通过构建巧妙数学模型，控制电机输出恰到好处的动力，使“人车合一”，让骑行变成了一种乐趣。

A controller is a fundamental part of the electronic control system. It connects the sensors as “human brain” to know working status, and to use some sophisticated measurements in order to know how much power should be headed to the motor, making you feel becoming one with the car, Make riding a pleasure.

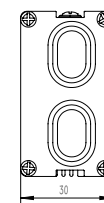
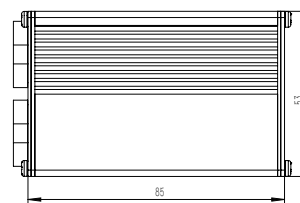
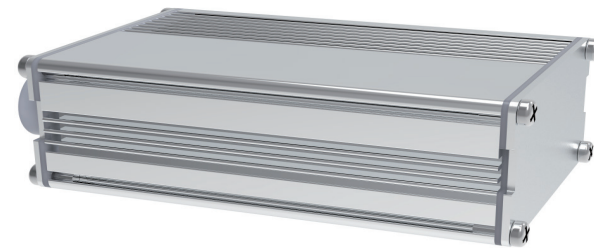
- 6T
- MINI 6T
- 6T Dual Drive
- 6T Plus
- 9T
- 9T Dual Drive
- 12T
- MINI 12T
- 12T Dual Drive
- 18T
- 24T



控制器系列

Controller Series

6T 控制器

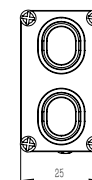
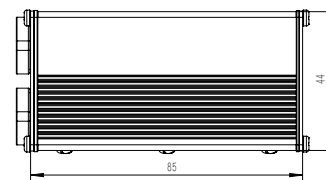


6T Controller

Product Parameters 产品参数

Rated Voltage (DCV) 额定电压	24/36/48
Low Voltage Protection(DCV) 欠压	21/31/40
Current Limit (Max A) 限流	15 or 18(Optional)
Rated Power (W) 额定功率	250/350
Operating Temperature(° C) 工作温度	-20~45° C
Size (mm) 尺寸	85*53*30
Com.protocol 通信协议	UART/CAN
Control Type 控制类型	Sine Wave正弦
Adaptation Motor适配电机	Hall Motor霍尔电机
Support Mode 档位	0-9
Static Power (W) 静态功率	<2
Walk Assistance (km/h) 助推	4~6
E-Brake 电子制动	Yes
IP level 防水等级	IPX5
Light Drive Capacity(DCV / W) 大灯驱动能力	6/3(max) 36/15(max)
PAS Mode PAS助力模式	Speed速度 Speed and Torque Integrated 速度和力矩组合
Certification 认证	CE/EN ISO 13849/ ROHS/UL 2849

MINI 6T 控制器



MINI 6T Controller

Product Parameters 产品参数

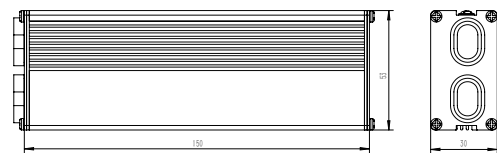
Rated Voltage (DCV) 额定电压	24/36/48
Low Voltage Protection(DCV) 欠压	21/31/40
Current Limit (Max A) 限流	15 or 18(Optional)
Rated Power (W) 额定功率	250/350
Operating Temperature(° C) 工作温度	-20~45° C
Size (mm) 尺寸	85*44*25
Com.protocol 通信协议	UART/CAN
Control Type 控制类型	Sine Wave正弦
Adaptation Motor适配电机	Hall Motor霍尔电机
Support Mode 档位	0-9
Static Power (W) 静态功率	<2
Walk Assistance (km/h) 助推	4~6
E-Brake 电子制动	Yes
IP level 防水等级	IPX5
Light Drive Capacity(DCV / W) 大灯驱动能力	6/3(max) 36/15(max)
PAS Mode PAS助力模式	Speed速度 Speed and Torque Integrated 速度和力矩组合
Certification 认证	CE/EN ISO 13849/ ROHS/UL 2849

Product Features 产品特点

- Built-in light module is adaptable with 6V/12V/36V/48V lights 内置灯模块，可搭配6V/12V/36V/48V车灯
- With small and light weight structure, it can be placed in tubes with a diameter of 50mm. 整体结构小巧轻便，可以放入直径为50mm的管内

6T 双驱控制器

6T Dual Drive Controller



Product Features 产品特点

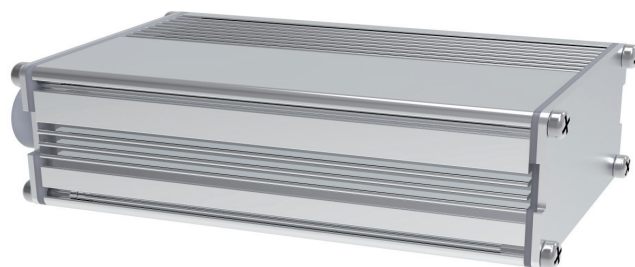
- Two sets of in-wheel hub motors both front and rear generate more power of a vehicle.
实现同时驱动前后两组轮毂电机，动力更强劲
- No differential speed ensures you a smooth acceleration.
解决双电机运转产生的差速问题，提速更平稳
- Front wheel drive, rear wheel drive, or all-wheel drive can be switched easily.
前驱、后驱、前后驱可随意切换，骑行更顺畅
- Design of the master-slave motor control systems enable you a safer driving.
两组电机控制系统互为主从关系，驾驶更安全

Product Parameters 产品参数

Rated Voltage (DCV) 额定电压	36/48
Low Voltage Protection(DCV) 欠压	31/40
Current Limit (Max A) 限流	15*2 or 18*2 (Optional)
Rated Power (W) 额定功率	250*2/350*2
Operating Temperature(° C) 工作温度	-20~45° C
Size (mm) 尺寸	150*53*30
Com.protocol 通信协议	UART/CAN
Control Type 控制类型	Sine Wave正弦
Adaptation Motor适配电机	Hall Motor霍尔电机
Support Mode 档位	0-9
Static Power (W) 静态功率	<4
Walk Assistance (km/h) 助推	4~6
E-Brake 电子制动	Yes
IP level 防水等级	IP X5
Light Drive Capacity(DCV / W) 大灯驱动能力	6/3(max) 36/15(max)
PAS Mode PAS助力模式	Speed速度 Speed and Torque Integrated 速度和力矩组合
Certification 认证	CE/EN ISO 13849/ ROHS

大6T 控制器

6T PLUS Controller

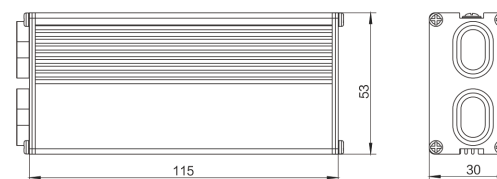


Product Parameters 产品参数

Rated Voltage (DCV) 额定电压	24/36/48
Low Voltage Protection(DCV) 欠压	21/31/40
Current Limit (Max A) 限流	20
Rated Power (W) 额定功率	250/350/500
Operating Temperature(° C) 工作温度	-20~45° C
Size (mm) 尺寸	85*53*30
Com.protocol 通信协议	UART/CAN
Control Type 控制类型	Sine Wave正弦
Adaptation Motor适配电机	Hall Motor霍尔电机
Support Mode 档位	0-9
Static Power (W) 静态功率	<2
Walk Assistance (km/h) 助推	4~6
E-Brake 电子制动	Yes
IP level 防水等级	IPX5
Light Drive Capacity(DCV / W) 大灯驱动能力	6/3(max) 36/15(max)
PAS Mode PAS助力模式	Speed速度 Speed and Torque Integrated 速度和力矩组合
Certification 认证	CE/EN ISO 13849/ ROHS

9T 控制器

9T Controller



Product Parameters 产品参数

Rated Voltage (DCV) 额定电压	36/48/52
Low Voltage Protection(DCV) 欠压	31/40/43
Current Limit (Max A) 限流	22
Rated Power (W) 额定功率	350/500/750
Operating Temperature(° C) 工作温度	-20~45° C
Size (mm) 尺寸	115*53*30
Com.protocol 通信协议	UART/CAN
Control Type 控制类型	Sine Wave正弦
Adaptation Motor适配电机	Hall Motor霍尔电机
Support Mode 档位	0-9
Static Power (W) 静态功率	<2
Walk Assistance (km/h) 助推	4~6
E-Brake 电子制动	Yes
IP level 防水等级	IPX5
Light Drive Capacity(DCV / W) 大灯驱动能力	6/3(max) 36/15(max)
PAS Mode PAS助力模式	Speed速度 Speed and Torque Integrated 速度和力矩组合
Certification 认证	CE/EN ISO 13849/ ROHS/UL 2849

9T 双驱控制器

9T Dual Drive Controller



Product Features 产品特点

- Two sets of in-wheel hub motors both front and rear generate more power of a vehicle.
实现同时驱动前后两组轮毂电机，动力更强劲
- No differential speed ensures you a smooth acceleration.
解决双电机运转产生的差速问题，提速更平稳
- Front wheel drive, rear wheel drive, or all-wheel drive can be switched easily.
前驱、后驱、前后驱可随意切换，骑行更顺畅
- Design of the master-slave motor control systems enable you a safer driving.
两组电机控制系统互为主从关系，驾驶更安全

Product Parameters 产品参数

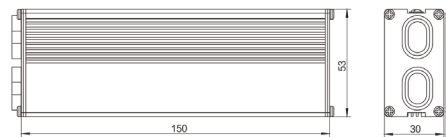
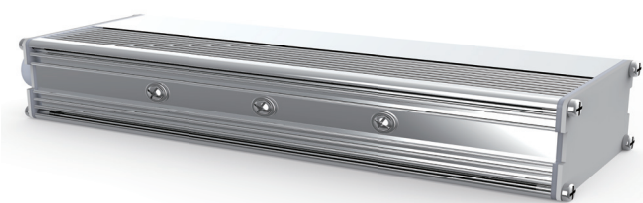
Rated Voltage (DCV) 额定电压	48/52
Low Voltage Protection(DCV) 欠压	40/43
Current Limit (Max A) 限流	22*2
Rated Power (W) 额定功率	500*2/750*2
Operating Temperature(° C) 工作温度	-20~45° C
Size (mm) 尺寸	130*62*65
Com.protocol 通信协议	UART/CAN
Control Type 控制类型	Sine Wave正弦
Adaptation Motor适配电机	Hall Motor霍尔电机
Support Mode 档位	0-9
Static Power (W) 静态功率	<4
Walk Assistance (km/h) 助推	4~6
E-Brake 电子制动	Yes
IP level 防水等级	IPX5
Light Drive Capacity(DCV / W) 大灯驱动能力	6/3(max) 36/15(max)
PAS Mode PAS助力模式	Speed速度 Speed and Torque Integrated 速度和力矩组合
Certification 认证	CE/EN ISO 13849/ ROHS

I2T 控制器

12T Controller

Product Parameters 产品参数

Rated Voltage (DCV) 额定电压	36/48/52
Low Voltage Protection(DCV) 欠压	31/40/43
Current Limit (Max A) 限流	30 or 36(Optional)
Rated Power (W) 额定功率	500/750/1000
Operating Temperature(° C) 工作温度	-20~45° C
Size (mm) 尺寸	150*53*30
Com.protocol 通信协议	UART/CAN
Control Type 控制类型	Sine Wave正弦
Adaptation Motor适配电机	Hall Motor霍尔电机
Support Mode 档位	0-9
Static Power (W) 静态功率	<2
Walk Assistance (km/h) 助推	4~6
E-Brake 电子制动	Yes
IP level 防水等级	IP X5
Light Drive Capacity(DCV / W) 大灯驱动能力	6/3(max) 36/15(max)
PAS Mode PAS助力模式	Speed速度 Speed and Torque Integrated 速度和力矩组合
Certification 认证	CE/EN ISO 13849/ ROHS/UL 2849

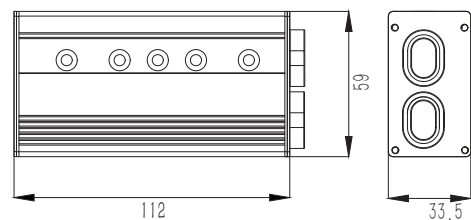
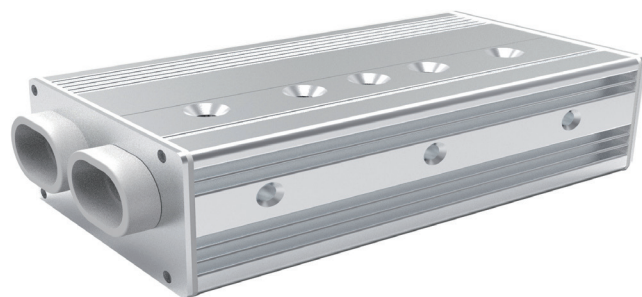


MINI I2T 控制器

MINI 12T Controller

Product Parameters 产品参数

Rated Voltage (DCV) 额定电压	36/48/52
Low Voltage Protection(DCV) 欠压	31/40/43
Current Limit (Max A) 限流	30 or 36(Optional)
Rated Power (W) 额定功率	500/750/1000
Operating Temperature(° C) 工作温度	-20~45° C
Size (mm) 尺寸	115*59*33
Com.protocol 通信协议	UART/CAN
Control Type 控制类型	Sine Wave正弦
Adaptation Motor适配电机	Hall Motor霍尔电机
Support Mode 档位	0-9
Static Power (W) 静态功率	<2
Walk Assistance (km/h) 助推	4~6
E-Brake 电子制动	Yes
IP level 防水等级	IPX5
Light Drive Capacity(DCV / W) 大灯驱动能力	6/3(max) 36/15(max)
PAS Mode PAS助力模式	Speed速度 Speed and Torque Integrated 速度和力矩组合
Certification 认证	CE/EN ISO 13849/ ROHS/UL 2849

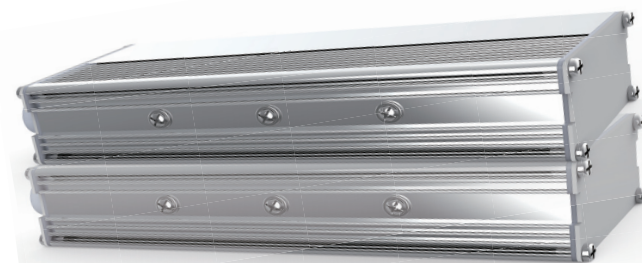


I2T 双驱控制器

12T Dual Drive Controller

Product Parameters 产品参数

Rated Voltage (DCV) 额定电压	36/48/52
Low Voltage Protection(DCV) 欠压	31/40/43
Current Limit (Max A) 限流	30*2 or 36*2(Optional)
Rated Power (W) 额定功率	500/750/1000
Operating Temperature(° C) 工作温度	-20~45° C
Size (mm) 尺寸	150*53*30
Com.protocol 通信协议	UART/CAN
Control Type 控制类型	Sine Wave正弦
Adaptation Motor适配电机	Hall Motor霍尔电机
Support Mode 档位	0-9
Static Power (W) 静态功率	<4
Walk Assistance (km/h) 助推	4~6
E-Brake 电子制动	Yes
IP level 防水等级	IP X5
Light Drive Capacity(DCV / W) 大灯驱动能力	6/3(max) 36/15(max)
PAS Mode PAS助力模式	Speed速度 Speed and Torque Integrated 速度和力矩组合
Certification 认证	CE/EN ISO 13849/ ROHS

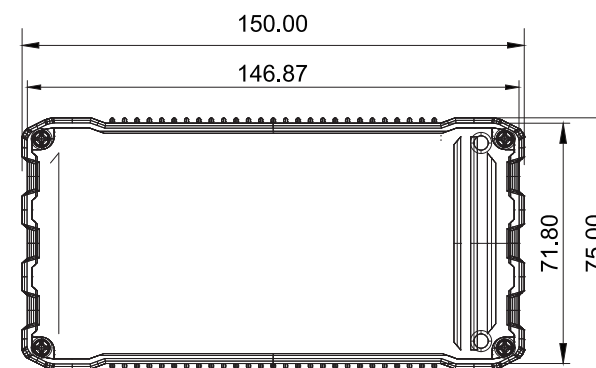
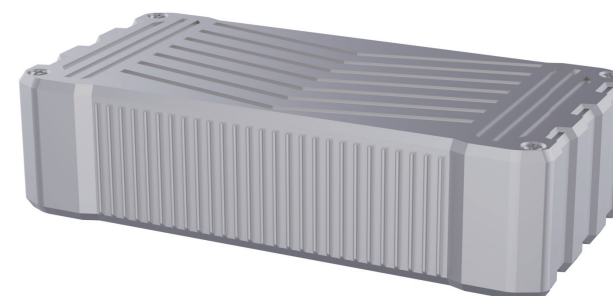


I8T 控制器

18T Controller

Product Parameters 产品参数

Rated Voltage (DCV) 额定电压	48/52/60/72
Low Voltage Protection(DCV) 欠压	40/43/52/63
Current Limit (Max A) 限流	50
Rated Power (W) 额定功率	1500/2000
Operating Temperature(° C) 工作温度	-20~45° C
Size (mm) 尺寸	150*75*38
Com.protocol 通信协议	UART/CAN
Control Type 控制类型	Sine Wave正弦
Adaptation Motor适配电机	Hall Motor霍尔电机
Support Mode 档位	0-9
Static Power (W) 静态功率	<2
Walk Assistance (km/h) 助推	4~6
E-Brake 电子制动	Yes
IP level 防水等级	IPX5
Light Drive Capacity(DCV / W) 大灯驱动能力	6/3(max) 36/15(max)
PAS Mode PAS助力模式	Speed速度 Speed and Torque Integrated 速度和力矩组合
Certification 认证	CE/EN ISO 13849/ ROHS/UL 2849

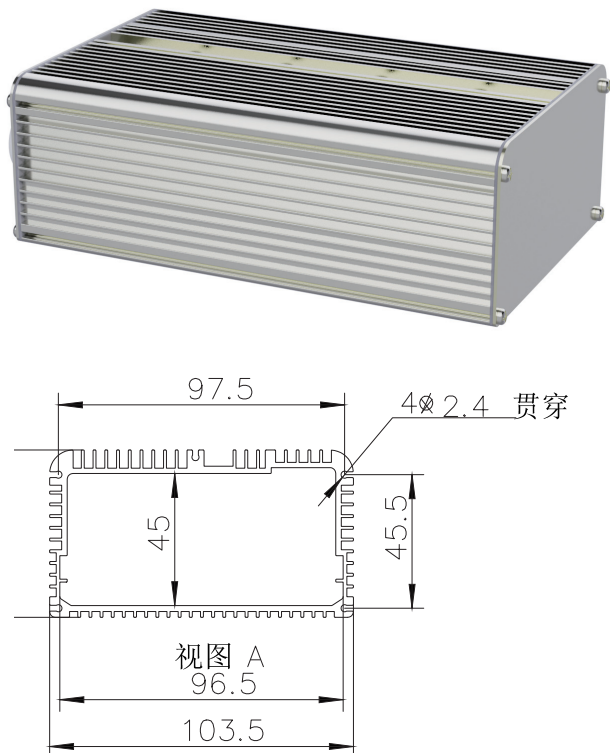


24T 控制器

24T Controller

Product Parameters 产品参数

Rated Voltage (DCV) 额定电压	48/52/60/72
Low Voltage Protection(DCV) 欠压	40/43/51/63
Current Limit (Max A) 限流	50
Rated Power (W) 额定功率	1500/2000
Operating Temperature(° C) 工作温度	-20~45° C
Size (mm) 尺寸	165*103.5*57
Com.protocol 通信协议	UART/CAN
Control Type 控制类型	Sine Wave正弦
Adaptation Motor适配电机	Hall Motor霍尔电机
Support Mode 档位	0-9
Static Power (W) 静态功率	<4
Walk Assistance (km/h) 助推	4~6
E-Brake 电子制动	Yes
IP level 防水等级	IP X5
Light Drive Capacity(DCV / W) 大灯驱动能力	6/3(max) 36/15(max)
PAS Mode PAS助力模式	Speed速度 Speed and Torque Integrated 速度和力矩组合
Certification 认证	CE/EN ISO 13849/ ROHS



Z01 控制器外壳

Z01 Controller Housing

Product Parameters 产品参数

Model Name 型号名称	LD-Z01
Size (mm) 尺寸	186*63*42
Adaptive Controller 适配控制器	12T/9T/6T
Shell Material 壳体材料	Aluminum铝
Surface Appearance 外观颜色	Frosted Black磨砂黑
IP level 防水级别	IPX5
Certification 认证	CE/EN ISO 13849/ ROHS



ZS206 控制器外壳

ZS206 Controller Housing

Product Parameters 产品参数

Model Name 型号名称	ZS206
Size (mm) 尺寸	209*52*31
Adaptive Controller 适配控制器	6T/9T/12T/ Dual
Shell Material 壳体材料	Aluminum铝
Surface Appearance 外观颜色	Frosted Black磨砂黑
IP level 防水级别	IPX5
Certification 认证	CE/EN ISO 13849/ ROHS



适配电池壳 Adaptive Battery Case

It can adapt to the battery shells of various mainstream controllers, such as dragon,polly,cuttle,etc.

适配各种主流带控制器电池壳，海龙、鹦鹉、海兔等

光芒 BRILLIANCE
Model:RB-1/2/3



海兔 CUTTLE
Model:DC-1C/2C



虎鲨TIGERSHARK
Model:DS-4C/5C/6C



鹦鹉POLLY
Model:DP- 5C/6C/9C



袋鼠KANGAROO
Model:RK-3C/4C



飞鱼 VULPECULA
Model:RV-5C



蜻蜓DRAGONFLY
IF-2C/3C/4C



仪表是一个简单的“艺术品”主要起到开启系统和关闭控制系统，还有一个

显示作用，电池电量，骑行速度，当前输出档位和输出模式等。也可以用来设置限速值，读取电池信息和电机信息，控制器信息等。

它是一个比较简单的展示工具。但往往客户对它的显示界面，外观设计，结构设计和防水设计等要求极高。容不得一点瑕疵！

Display is a simple art. Its main functions are turning on and off the control system, displaying battery power, riding speed, current output gear, output mode and so on. It can also be used for setting speed limit, monitoring status of battery, motor and controller.

Display also works as a simple display panel. However, customers are critical to its display interface, physical appearance, structure quality and waterproof level.

C201

C351

C352

C353

W108

W750

W780

仪表系列

Display Series



C201 仪表

C201 Display

Product Parameters 产品参数

Display type 仪表类型	TFT
Rated Voltage (V) 额定电压	24/36/48/52
Support Modes 档位	0-3/0-5/0-9
Communication Protocol 通信协议	UART/CAN
IP level 防水等级	IP 65
Operating Temperature(° C) 工作温度	-20~45° C
Size (mm) 尺寸	93*54 *32
Holder (mm) 支架	22.2/25.4/31.8



-  We can tailor make our customers power-on screen logo with animation display effect.
可定制客户开机LOGO，动画显示效果
-  2.0 TFT screens (320* 240 pixels)
2.0TFT屏幕 (320* 240 pixels)
-  Update firmware
仪表固件可升级
-  Bluetooth function
蓝牙功能

C351 仪表

C351 Display

Product Parameters 产品参数

Display type 仪表类型	TFT
Rated Voltage (V) 额定电压	24/36/48/52
Support Modes 档位	0-3/0-5/0-9
Communication Protocol 通信协议	UART/CAN
IP level 防水等级	IP 65
Operating Temperature(° C) 工作温度	-20~45° C
Size (mm) 尺寸	104.5*66*21
Holder (mm) 支架	22.2/25.4/31.8



-  We can tailor make our customers power-on screen logo with animation display effect.
可定制客户开机LOGO，动画显示效果
-  3.5 TFT screens (320 * 480 pixels)
3.5TFT屏幕 (320*480pixels)
-  Update firmware
仪表固件可升级
-  Bluetooth function
蓝牙功能
-  Clock function
时钟功能
-  USB power supply
USB供电功能

C352 仪表

C352 Display

Product Parameters 产品参数

Display type 仪表类型	TFT
Rated Voltage (V) 额定电压	24/36/48/52
Support Modes 档位	0-3/0-5/0-9
Communication Protocol 通信协议	UART/CAN
IP level 防水等级	IP 65
Operating Temperature(° C) 工作温度	-20~45° C
Size (mm) 尺寸	116*78*21
Holder (mm) 支架	22.2/25.4/31.8

-  We can tailor make our customers power-on screen logo with animation display effect.
可定制客户开机LOGO，动画显示效果
-  3.5 TFT screens (320 * 480 pixels)
3.5TFT屏幕 (320*480pixels)
-  Update firmware
仪表固件可升级
-  Bluetooth function
蓝牙功能
-  Clock function
时钟功能
-  USB power supply
USB供电功能



C353 仪表

C353 Display

Product Parameters 产品参数

Display type 仪表类型	TFT
Rated Voltage (V) 额定电压	24/36/48/52
Support Modes 档位	0-3/0-5/0-9
Communication Protocol 通信协议	UART/CAN
IP level 防水等级	IP 65
Operating Temperature(° C) 工作温度	-20~45° C
Size (mm) 尺寸	107*79.5*37
Holder (mm) 支架	22.2/25.4/31.8

-  We can tailor make our customers power-on screen logo with animation display effect.
可定制客户开机LOGO，动画显示效果
-  3.5 TFT screens (480 * 320 pixels)
3.5TFT屏幕 (480*320pixels)
-  Update firmware
仪表固件可升级
-  Bluetooth function
蓝牙功能
-  Clock function
时钟功能



W108 仪表

W108 Display

Product Parameters 产品参数

Display type 仪表类型	LCD
Rated Voltage (V) 额定电压	24/36/48
Support Modes 档位	0-3/0-5/0-9
Communication Protocol 通信协议	UART/CAN
IP level 防水等级	IP 65
Operating Temperature(° C) 工作温度	-20~45° C
Size (mm) 尺寸	107*58.4*13.5
Holder (mm) 支架	22.2/25.4/31.8



-  Update firmware
仪表固件可升级
-  Bluetooth function
蓝牙功能

W750 仪表

W750 Display

Product Parameters 产品参数

Display type 仪表类型	LCD
Rated Voltage (V) 额定电压	24/36/48
Support Modes 档位	0-3/0-5/0-9
Communication Protocol 通信协议	UART/CAN
IP level 防水等级	IP 65
Operating Temperature(° C) 工作温度	-20~45° C
Size (mm) 尺寸	87.5*59*22.5
Holder (mm) 支架	22.2/25.4/31.8



-  Update firmware
仪表固件可升级
-  Bluetooth function
蓝牙功能

W780 仪表

W780 Display

Product Parameters 产品参数

Display type 仪表类型	LCD
Rated Voltage (V) 额定电压	24/36/48
Support Modes 档位	0-3/0-5/0-9
Communication Protocol 通信协议	UART/CAN
IP level 防水等级	IP 65
Operating Temperature(° C) 工作温度	-20~45° C
Size (mm) 尺寸	70*47.5*58.44
Holder (mm) 支架	22.2



-  We can tailor make our customers power-on screen logo with animation display effect.
可定制客户开机LOGO，动画显示效果
-  Update firmware
仪表固件可升级
-  Bluetooth function
蓝牙功能

传感器就像是人的神经末梢，他能够“感知”您的骑行状态，并将这些

物理状态转换成“大脑”能够接收和分析处理的电信号。在恰到好处时间让“大脑”控制引擎输出恰到好处的动力。让骑行者感受到 仿佛自己骑的是一辆灵魂战车。

它是控制系统与自行车的信息纽带。没有他就像人失去了感官。

Sensors, like the nerve endings in human body, can detect your bike's working status and convert it into electrical signals that the "brain" can receive and analyze. It helps the controller to determine the perfect amount of power output to motor, giving you a feeling like riding a soul chariot.

Sensors are the connectors of controller and other components, just like the sense that human cannot lose.

LD-DH

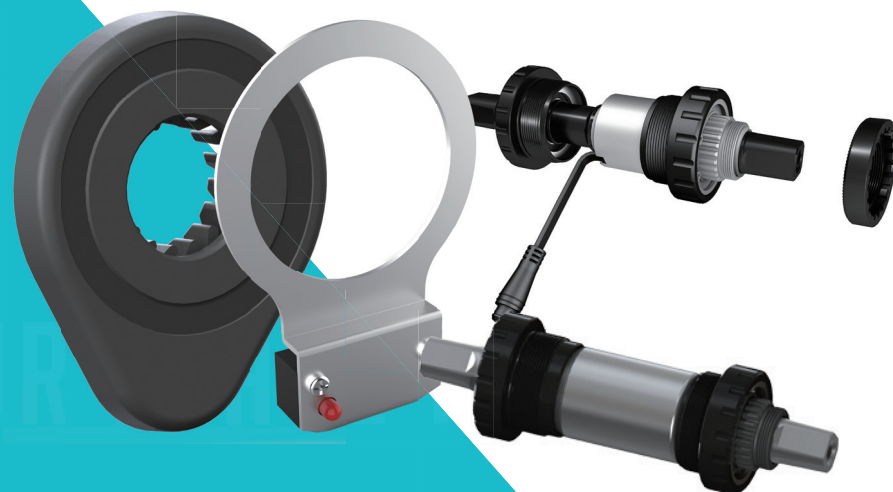
LD-SD

TORG2H

BBTSI/3

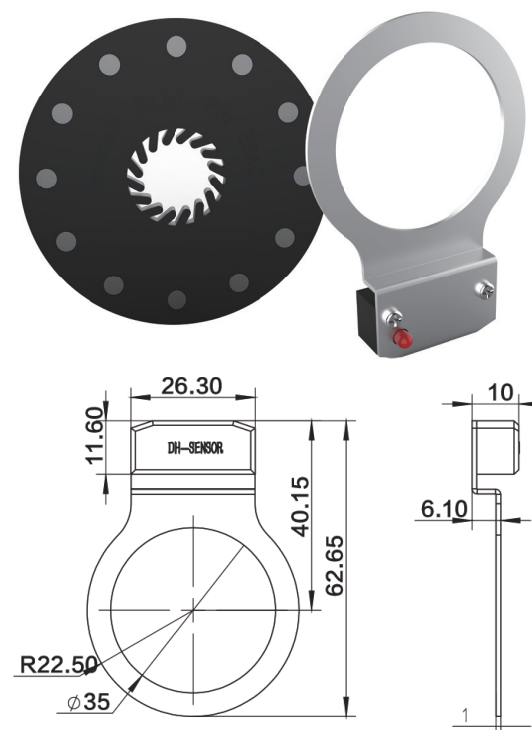
传感器系列

Sensor Series



分体式速度传感器 LD-DH

Split Speed Sensor LD-DH

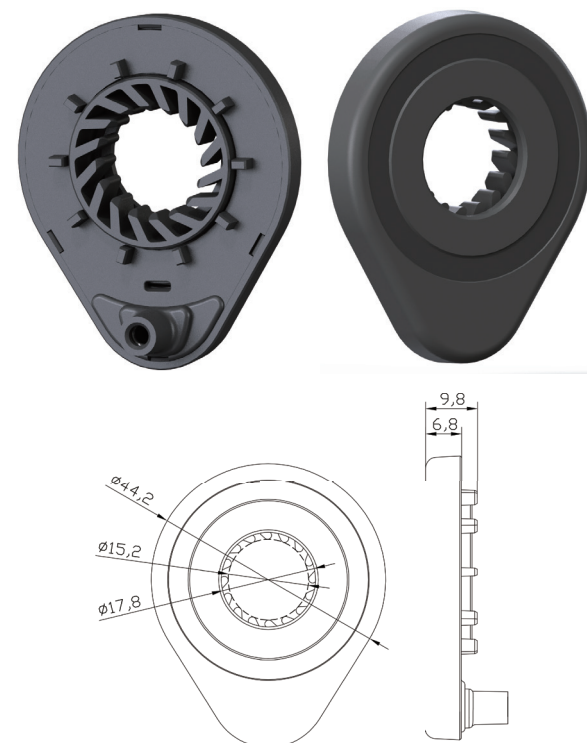


Product Parameters 产品参数

Shell Material 壳体材料	PA66
Entry Cable 出线方式	3-core
Size (mm) 尺寸	63*45*10
IP level 防水级别	IP 65
Number Of Magnetic Steel 磁钢数量	12
Surface Appearance 外观颜色	Frosted Black磨砂黑
Working Voltage(V) 工作电压	5
Static Power (W) 静态功率	<0.5
Certification 认证	CE/EN ISO 13849/ROHS

一体式速度传感器 LD-SD

Integrated Speed Sensor LD-SD



Product Parameters 产品参数

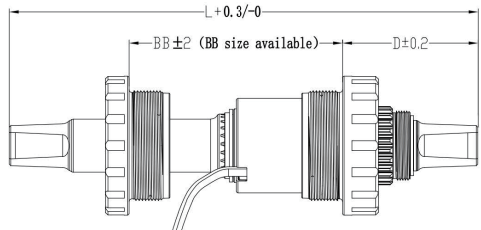
Working Voltage(V) 工作电压	4.0~5.5
Working Current(mA) 工作电流	10 (typ)
Size (mm) 尺寸	54*44*15.5
Number Of Signal 转一圈信号数量	12
Certification 认证	CE/EN ISO 13849/ROHS
Working Temperature 工作温度	-20~60° C
Pull-out Force Of Cable (N) 线材拉力	20~50
IPlevel 防水级别	IP 65

Product Features 产品特点

- The compact and light weight structure secure an easy installation and after-service.
整体结构小巧轻便，方便安装与售后；
- Five way installation has higher coaxiality and hall signal is more stable
五通安装同轴度更高，霍尔信号更均匀稳定；

中轴力矩传感器 TORG2H

Torque sensor TORG2H

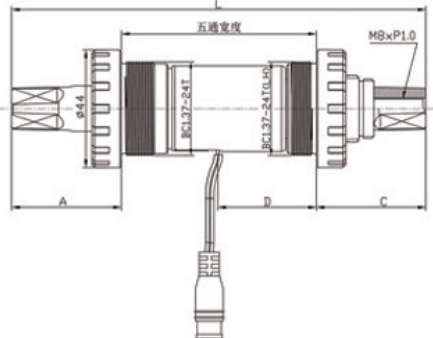


Product Parameters 产品参数

Working Voltage 额定电压	5V
Output Voltage(DCV) 力矩输出电压范围	0.7~4.8V
ZTV Initial Voltage ZTV 原点电压	0.7±0.05V
Torque Signal Resolution 力矩信号斜率	35mv/N.m
Cadence Signals (pulses/cycle): 踏频信号 (信号/周)	36 pcs
Duty Cycle 占空比	40~60%
Shaft 轴杆	JIS
Weight 重量	0.35kg(68/150mm)
Working Temperature 工作温度	-20 ~ 85°C
Waterproof Rating IP 等级	IP57
Certification 证书	EN14766
Patent 专利	National invention patent 国家发明专利

五通JIS轴 BBTSI/3

BB JIS SHAFT BBTSI/3

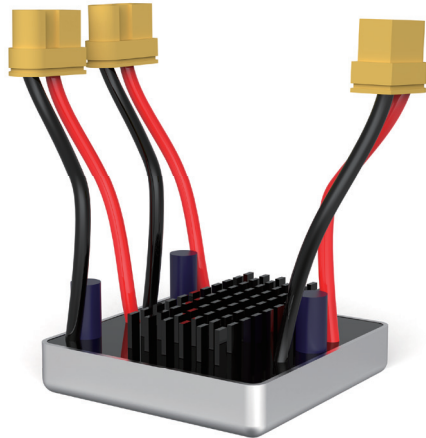


Product Parameters 产品参数

输入电压 Input Voltage	4.5~5.5V
输入功率 Input Power	<0.2W
力矩输出电压 Torque Output Range	0.74~3.3V
力矩信号斜率 Torque Signal Slope	35mV/N.m
力矩测量范围 Torque Measuring Range	0.5~80N.m
速度信号脉冲数 Speed Signal Pulse	32r/36r
速度信号占空比 Speed Signal Duty Cycle	40%~60%
设计标准 Design Standard	EN14764/EN14766/ISO13849
碗组牙规 Cup Set Thread Specification	BC 1.37*24T
齿盘规格 Crankset Construction	1pcs/2pcs/3pcs 齿盘 crankse
五通宽度 Bottom Bracket Wdth	68/73/84/100/120 mm
防护等级 Waterproof Grade	IP65
工作温度 Working Temperature	-20~60°C
储存温度 Storage Temperature	-30~80°C

双电池均衡器 7260

Dual battery balancer 7260

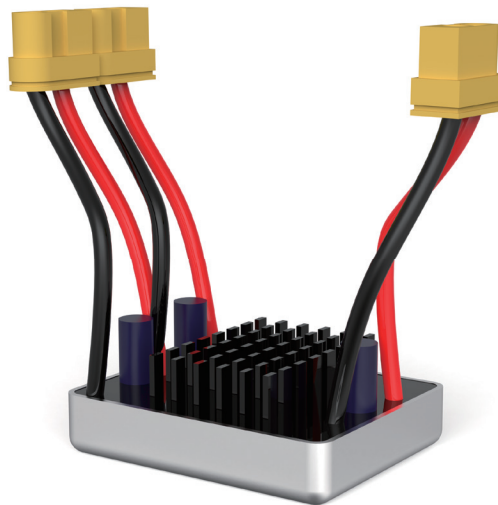


Product Parameters 产品参数

Size (mm) 尺寸	51.8*41.3*10.5
Operating Voltage (V) 工作电压	7V~72V
Maximum single pass current (A) 最大单路通过电流	30A (≤8min)
Maximum double pass current (A) 最大双路通过电流	60A (≤8min)
Single continuous working current (A) 单路持续工作电流	20A
Double continuous working current (A) 双路持续工作电流	40A
Standby current (mA) 待机电流	4mA
Operating Temperature(°C) 工作温度	-10 ~70°C
IP level 防水等级	IP67
Shell material 外壳材质	Aluminum 铝合金

双电池均衡器 7280

Dual battery balancer 7280



Product Parameters 产品参数

Size (mm) 尺寸	51.8*51.8*10.5
Operating Voltage (V) 工作电压	7V~72V
Maximum single pass current (A) 最大单路通过电流	40A (≤8min)
Maximum double pass current (A) 最大双路通过电流	80A (≤8min)
Single continuous working current (A) 单路持续工作电流	30A
Double continuous working current (A) 双路持续工作电流	60A
Standby current (mA) 待机电流	4mA
Operating Temperature(°C) 工作温度	-10 ~70°C
IP level 防水等级	IP67
Shell material 外壳材质	Aluminum 铝合金

智能离线编程器

Intelligent Off-line Programmer



Product Parameters 产品参数

Communication Mode 通讯方式	Wired有线
Com.protocol 通信协议	UART/CAN
Size (mm) 尺寸	90*70*28
Colour 颜色	Black黑色
Applicable scenarios 适用场景	Update firmware 固件更新
Working Temperature 工作温度	-20~45° C

Product Features 产品特点

- High speed ; Stable 高速; 稳定
- Add buzzer sound reminder 增加蜂鸣器声音提醒

ISP数据编程器

ISP Data programmer

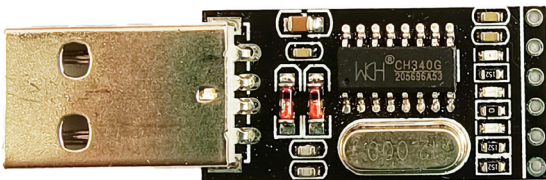


Product Parameters 产品参数

Communication Mode 通讯方式	Wired有线
Com.protocol 通信协议	UART
Size (mm) 尺寸	122*38*25
Colour 颜色	Black黑色
Applicable scenarios 适用场景	Update firmware 固件更新
Working Temperature 工作温度	-20~45° C

数据编程器

Data programmer



Product Parameters 产品参数

Communication Mode 通讯方式	Wired有线
Com.protocol 通信协议	UART
Size (mm) 尺寸	45*14*6
Colour 颜色	Black黑色
Applicable scenarios 适用场景	Update firmware 固件更新
Working Temperature 工作温度	-20~45° C

双驱控制器介绍
Introduction of dual-drive



该款双驱控制系统的主要特点：两个控制系统内部互相通讯，解决了速度差问题造成的骑行不适感和安全隐患，使骑行更舒适动力更足。相较于同等功率输出的单驱系统，由于前后驱动分别承担功率，在同等功率下骑行，两台电机的效率更高，启动扭矩更大，并可延长电机和电池的使用寿命。

系统适配更灵活：可适配LED、LCD、TFT等各种仪表，支持转把、速度传感器和力矩传感器等。

The main feature of the dual-drive control system: the two control systems communicate with each other internally, which solves the problem of discomfort and safety hazards caused by the speed difference, and makes the riding more comfortable and more powerful. Compared with a single-drive system with the same output power, because the front and rear drives separately bear the power, riding at the same power, the two motors have higher efficiency, larger starting torque, and can extend the service life of the motors and batteries.

System adaptation is more flexible: it can be adapted to various displays such as LED, LCD, TFT, etc, and supports throttle, speed sensors and torque sensors.